



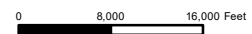
Sources: Esri, HERE, Garmin, USGS, Intermap, INCREMENT P, NRCan, Esri Japan, METI, Esri China (Hong Kong), Esri Korea, Esri (Thailand), NGCC, © OpenStreetMap contributors, and the GIS User Community



Ventura County, California
Resource Management Agency
GIS Development & Mapping Services
Map created on 2-25-2021



County of Ventura
Planning Director Hearing
Case No PL20-0055
Exhibit 4 - Location Maps



Disclaimer: This Map was created by the Ventura County Resource Management Agency, Mapping Services - GIS which is designed and operated solely for the convenience of the County and related public agencies. The County does not warrant the accuracy of this map and no decision involving a risk of economic loss or physical injury should be made in reliance thereon.





060-0-380-030

HOBSON

UNION PACIFIC

FARIA

PACIFIC COAST

101

101



Ventura County, California
Resource Management Agency
GIS Development & Mapping Services
Map Created on 2-25-2021
This aerial imagery is under the
copyrights of Pictometry: DEC. 2019

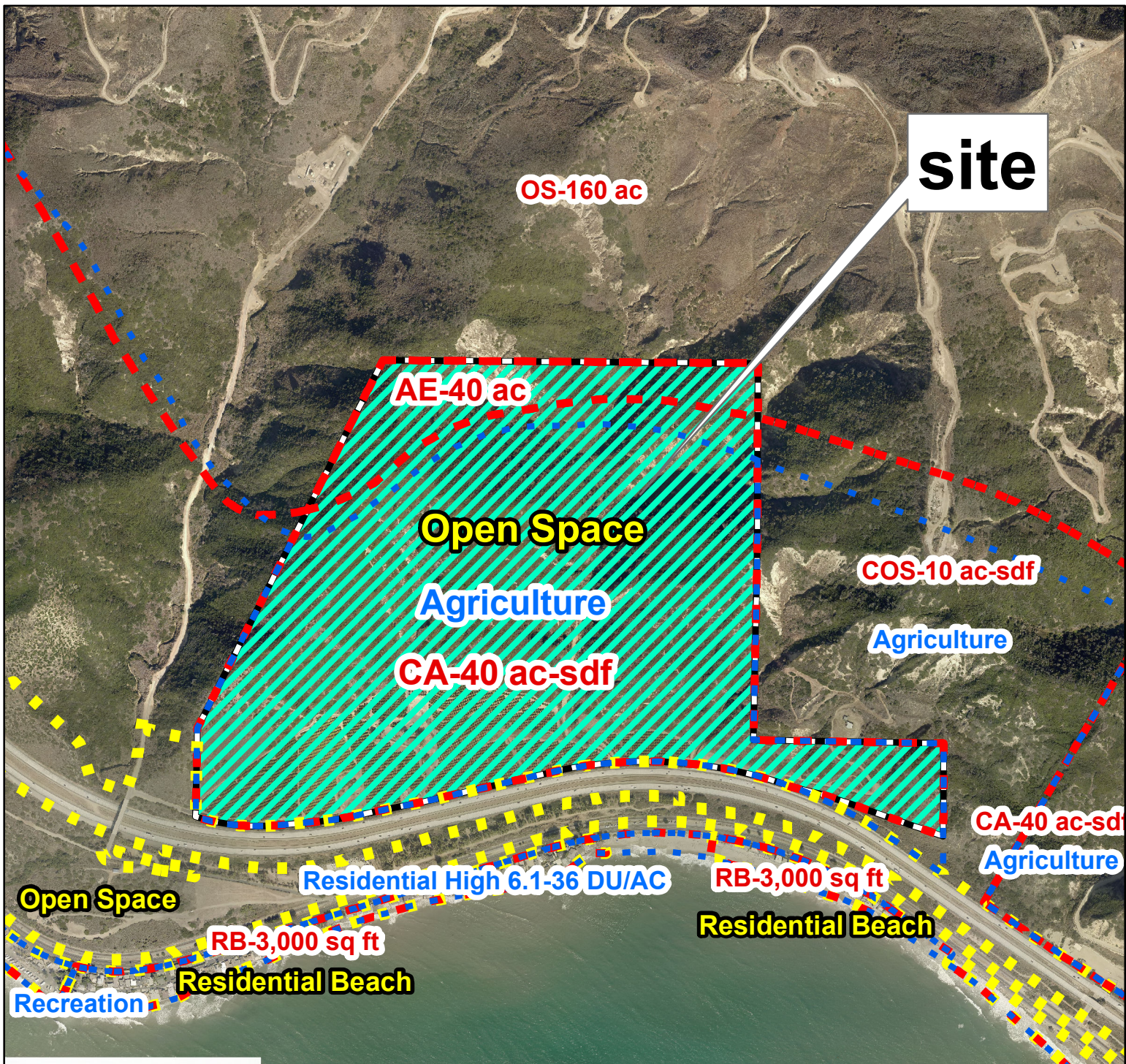


**County of Ventura
Planning Director Hearing
Aerial Photography
PL20-0055**




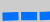
Disclaimer: This Map was created by the Ventura County Resource Management Agency, Mapping Services - GIS which is designed and operated solely for the convenience of the County and related public agencies. The County does no warrant the accuracy of this map and no decision involving a risk of economic loss or physical injury should be made in reliance thereon.




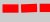


Project: PL20-0055

 **APN: 060-0-380-030**

 **Area Plans**

 **General Plan**

 **Zoning**



Ventura County
Resource Management Agency
Information Systems GIS Services
Map created on 2-25-2021
Source: Pictometry: 2019



**County of Ventura
Planning Director Hearing
General Plan & Zoning Map
PL20-0055**



Disclaimer: this map was created by the Ventura County Resource Management Agency Information Systems GIS, which is designed and operated solely for the convenience of the County and related public agencies. The County does not warrant the accuracy of this map and no decision involving a risk of economic loss or physical injury should be made in reliance therein

