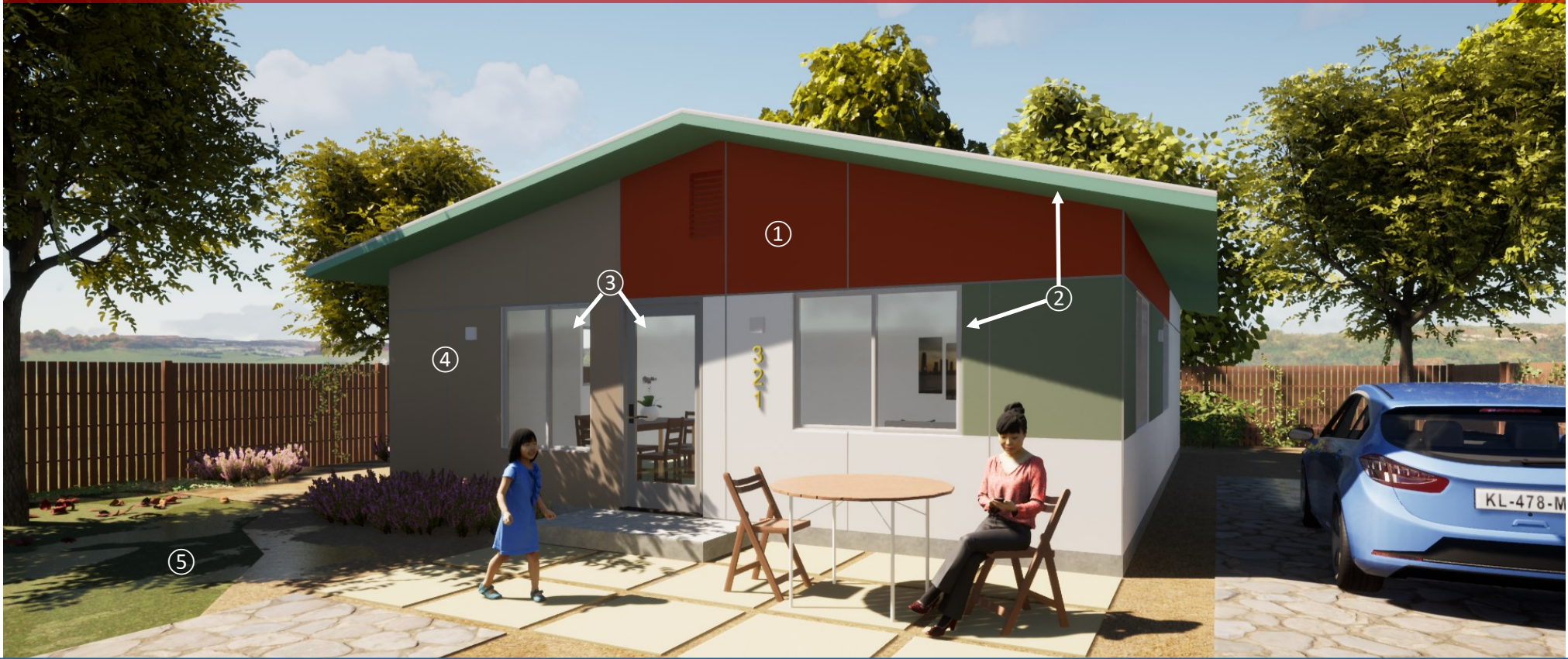


Do NOT begin construction until you have obtained a valid Building Permit from the Building & Safety Division



Use this plan for your detached Accessory Dwelling Unit (ADU) or Farmworker/Animal Caretaker Dwelling Unit!

Using this plan saves time and money during the permitting process!

Note: This rendering is for illustrative purposes only which represents the construction drawings already approved the County's Building & Safety Division. You cannot change the size or location of features, but you can personalize the look of your unit by customizing the building features listed on the right →

Exterior Customizable Features:

(See image above)

- ① Paint and siding
- ② Trim and frames
- ③ Doors and windows¹
- ④ Outdoor Light fixtures
- ⑤ Landscaping²
- ⑥ You can add a patio cover (see Handout B17)

Interior Customizable Features:

- ① Paint
- ② Doors and trim
- ③ Flooring
- ④ Cabinets and countertops
- ⑤ Lighting and plumbing fixtures

See reverse for this unit's floorplan!



¹ May be customizable with prior approval from the Building & Safety Division.

² May be subject to additional review by the Building and Safety Division for water efficiency (MWELo review).

Note: This standardized plan has already been reviewed and approved by the County's Building and Safety Division. For detailed construction drawings of this layout, see vcrma.org/en/accessory-dwellings-farmworker-dwellings.

Do **NOT** begin construction until you have obtained a valid Building Permit from the Building & Safety Division

