

HISTORIC AMERICAN BUILDINGS SURVEY

INDEX TO PHOTOGRAPHS

RAFAEL REYES ADOBE

Lockwood Valley Road
Ojai vicinity
Ventura County
California

HABS No. CA-2999

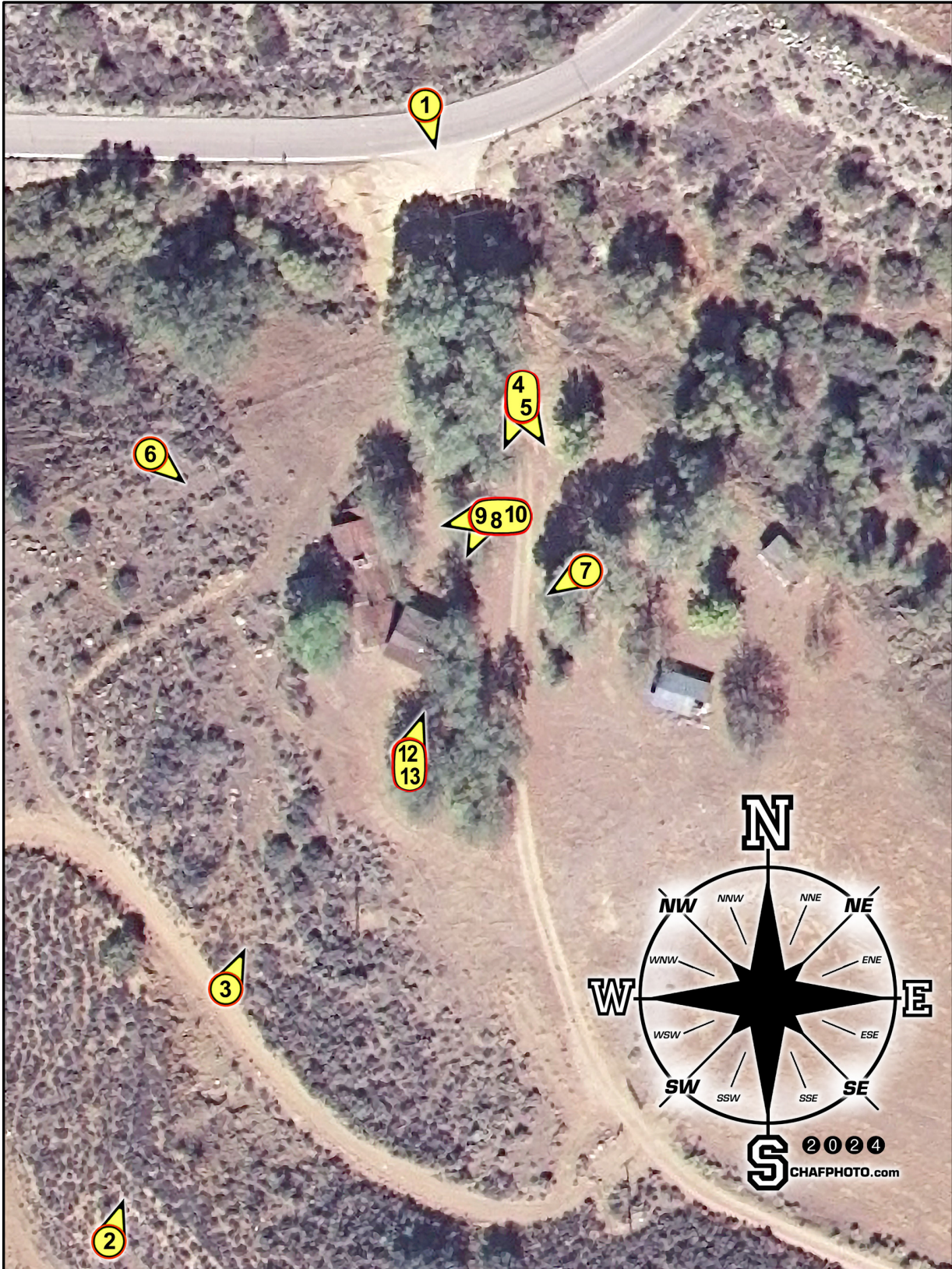
INDEX TO BLACK AND WHITE PHOTOGRAPHS

Stephen D. Schafer, photographer, August 2024.

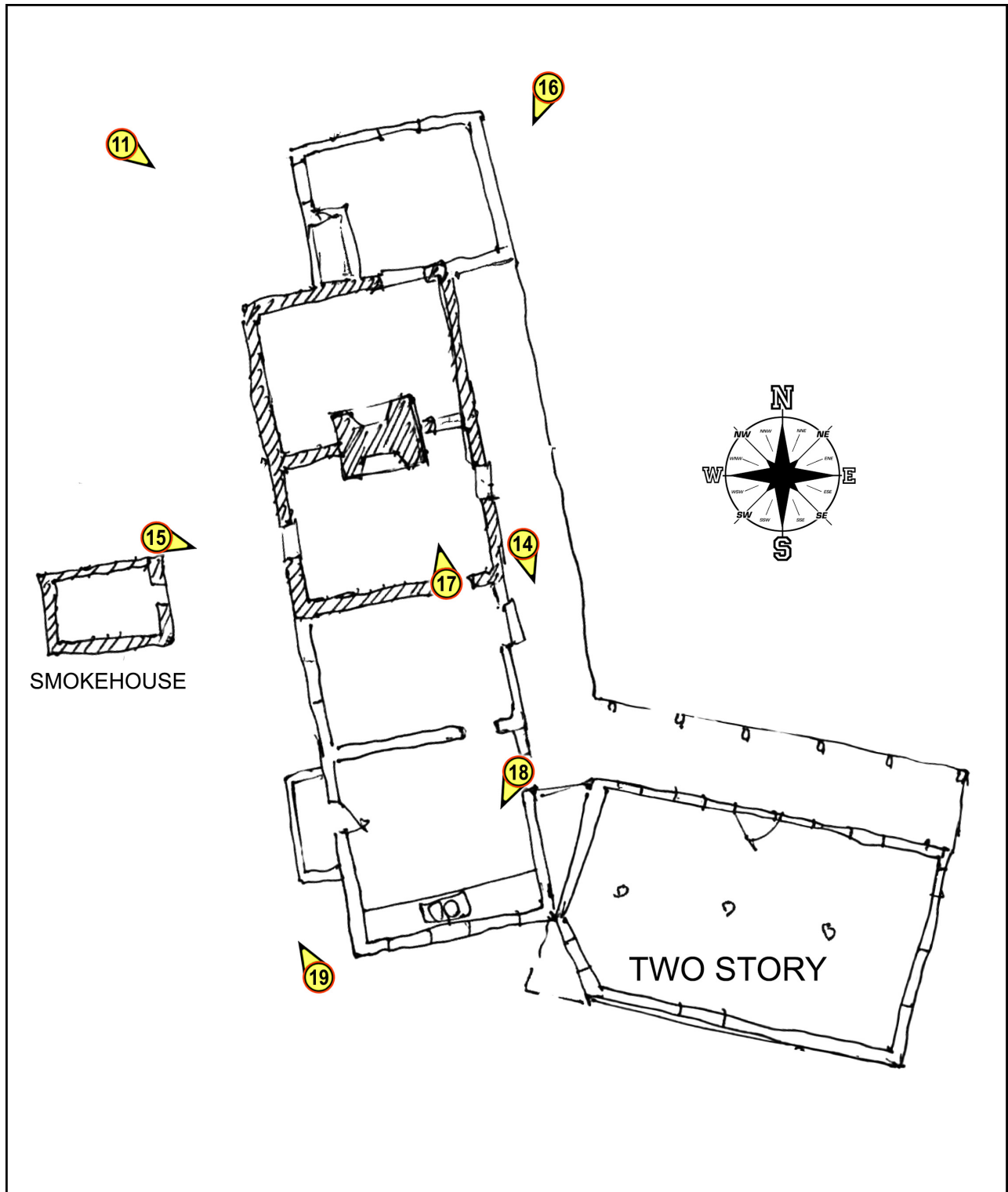
- | | |
|------------|---|
| CA-2999-1 | Vertical context view of entry gate on Lockwood Valley Rd. Camera height 6', facing south-southeast. |
| CA-2999-2 | Wide elevated context of Lockwood Valley from top of mesa behind Rafael Reyes Adobe, with Lockwood Valley Rd. in center of frame. Camera height 6', facing north-northeast. |
| CA-2999-3 | Elevated context view of adobe from road $\frac{3}{4}$ up face of mesa. Camera height 6', facing north-northeast. |
| CA-2999-4 | Context view of outbuildings at left side of drive. Left side of a two-part panorama. Camera height 6', facing southeast. |
| CA-2999-5 | Context view of adobe at right side of drive. Right side of a two-part panorama. Camera height 6', facing south-southwest. |
| CA-2999-6 | Oblique view of northwest corner of adobe with smoke house at right. Camera height 6', facing southeast. |
| CA-2999-7 | Oblique view of east corner of two-story wing. Camera height 6', facing southwest. |
| CA-2999-8 | Orthogonal view of northeast façade of two-story wing. Left side of a two-part panorama. Camera height 6', facing south-southwest. |
| CA-2999-9 | Orthogonal view of northeast façade of two-story wing, with 12' scale marked in tenths. Camera height 6', facing south-southwest. |
| CA-2999-10 | Orthogonal view of east façade of adobe. Right side of a two-part panorama. Camera height 6', facing west-southwest. |
| CA-2999-11 | Oblique view of northwest corner of adobe. Camera height 6', facing southeast. |

RAFAEL REYES ADOBE
HABS CA-2999
INDEX TO PHOTOGRAPHS (Page 2)

- CA-2999-12 View of southwest (rear) façade of two-story wing. Camera height 6', facing north-northeast.
- CA-2999-13 View of southwest (rear) façade of two-story wing, with 12' scale marked in tenths. Camera height 6', facing north-northeast.
- CA-2999-14 Oblique detail view along east façade (ruin) of adobe towards two-story building. Camera height 6', facing south-southeast.
- CA-2999-15 Detail view of west façade (ruin) of adobe. Camera height 5', facing east.
- CA-2999-16 Detail view of northeast corner façade (ruin) of adobe, with 3' scale. Camera height 5', facing south-southwest.
- CA-2999-17 Interior detail view of fireplace and chimney with 12' scale marked in tenths. Camera height 5', facing north-northwest.
- CA-2999-18 Interior detail view of kitchen at south end of adobe. Camera height 6', facing south-southwest.
- CA-2999-19 Oblique view of smokehouse west of adobe. Camera height 6', facing northwest.



USGS Aerial Survey of Lockwood Valley. Entity ID: 1063983_616502077 - Acquisition Date: 2007-09-30.



HISTORIC AMERICAN BUILDINGS SURVEY
SEE INDEX TO PHOTOGRAPHS FOR CAPTION
HABS NO. CA - 2999 - 1



ENLARGED 4" x 5" NEGATIVE



HISTORIC AMERICAN BUILDINGS SURVEY
SEE INDEX TO PHOTOGRAPHS FOR CAPTION
HABS No. CA - 2999 - 2

HABS CA. 2999. 2

18

ENLARGED 4" x 5" NEGATIVE



HISTORIC AMERICAN BUILDINGS SURVEY
SEE INDEX TO PHOTOGRAPHS FOR CAPTION
HABS No. CA - 2999 - 3

HABS CA.2999.3

17

60000

60000

ENLARGED 4" x 5" NEGATIVE

HISTORIC AMERICAN BUILDINGS SURVEY
SEE INDEX TO PHOTOGRAPHS FOR CAPTION
HABS No. CA - 2999 - 4



2

HABS CA.2999.4

PANO L.

ENLARGED 4" x 5" NEGATIVE



HISTORIC AMERICAN BUILDINGS SURVEY
SEE INDEX TO PHOTOGRAPHS FOR CAPTION
HABS No. CA - 2999 - 5

3

HABS CA-2999-5

PANO R.

ENLARGED 4" x 5" NEGATIVE



HISTORIC AMERICAN BUILDINGS SURVEY
SEE INDEX TO PHOTOGRAPHS FOR CAPTION
HABS No. CA - 2999 - 6

HABS CA. 2999.6

19

ENLARGED 4" x 5" NEGATIVE



2

HABS CA. 2999. 7

HISTORIC AMERICAN BUILDINGS SURVEY
SEE INDEX TO PHOTOGRAPHS FOR CAPTION
HABS No. CA - 2999 - 7

ENLARGED 4" x 5" NEGATIVE



HISTORIC AMERICAN BUILDINGS SURVEY
SEE INDEX TO PHOTOGRAPHS FOR CAPTION
HABS No. CA - 2999 - 8

HABS CA-2999-8

ENLARGED 4" x 5" NEGATIVE



HISTORIC AMERICAN BUILDINGS SURVEY
SEE INDEX TO PHOTOGRAPHS FOR CAPTION
HABS No. CA - 2999 - 9

HABS CA.2999.9 w/SCALE

ENLARGED 4" x 5" NEGATIVE



26

HABS CA. 2999. 10

HISTORIC AMERICAN BUILDINGS SURVEY
SEE INDEX TO PHOTOGRAPHS FOR CAPTION
HABS No. CA - 2999 - 10

ENLARGED 4" x 5" NEGATIVE



HISTORIC AMERICAN BUILDINGS SURVEY
SEE INDEX TO PHOTOGRAPHS FOR CAPTION
HABS No. CA - 2999 - 11

ENLARGED 4" x 5" NEGATIVE



HISTORIC AMERICAN BUILDINGS SURVEY
SEE INDEX TO PHOTOGRAPHS FOR CAPTION
HABS No. CA - 2999 - 12

ENLARGED 4" x 5" NEGATIVE



HISTORIC AMERICAN BUILDINGS SURVEY
SEE INDEX TO PHOTOGRAPHS FOR CAPTION
HABS No. CA - 2999 - 13

16
3

HABS CA.2999.13

SCALE

ENLARGED 4" x 5" NEGATIVE

HISTORIC AMERICAN BUILDINGS SURVEY
SEE INDEX TO PHOTOGRAPHS FOR CAPTION
HABS No. CA - 2999 - 14



HABS CA.2999.14

2

ENLARGED 4" x 5" NEGATIVE



5

HABS CA.2999-15

HISTORIC AMERICAN BUILDINGS SURVEY
SEE INDEX TO PHOTOGRAPHS FOR CAPTION
HABS No. CA - 2999 - 15

ENLARGED 4" x 5" NEGATIVE



HISTORIC AMERICAN BUILDINGS SURVEY
SEE INDEX TO PHOTOGRAPHS FOR CAPTION
HABS No. CA - 2999 - 16

HABS CA.2999.16

w/SCALE

ENLARGED 4" x 5" NEGATIVE

HISTORIC AMERICAN BUILDINGS SURVEY
SEE INDEX TO PHOTOGRAPHS FOR CAPTION
HABS NO. CA - 2999 - 17



ENLARGED 4" x 5" NEGATIVE



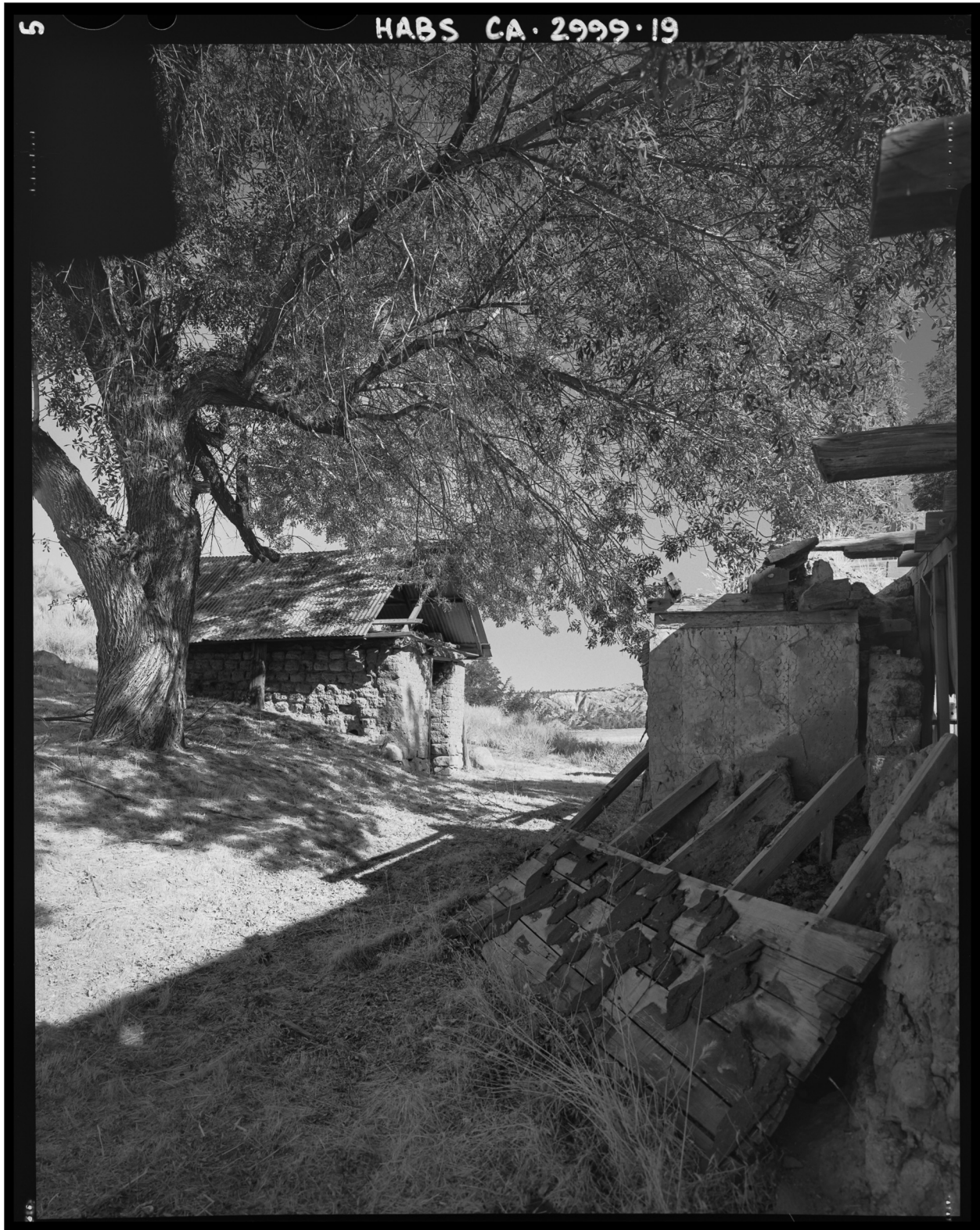
HISTORIC AMERICAN BUILDINGS SURVEY
SEE INDEX TO PHOTOGRAPHS FOR CAPTION
HABS No. CA - 2999 - 18

HABS CA-2999-18

13

ENLARGED 4" x 5" NEGATIVE

HISTORIC AMERICAN BUILDINGS SURVEY
SEE INDEX TO PHOTOGRAPHS FOR CAPTION
HABS NO. CA - 2999 - 19



ENLARGED 4" x 5" NEGATIVE